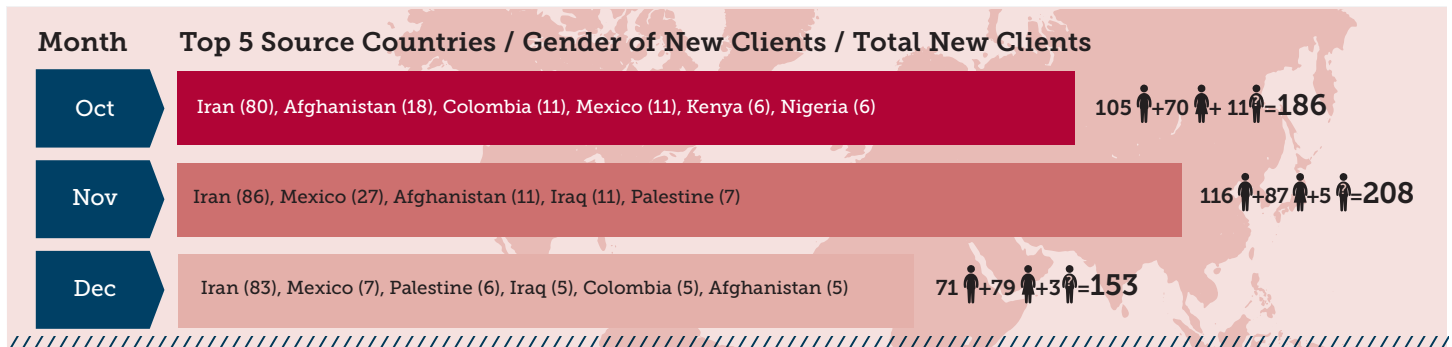


BC REFUGEE HUB BULLETIN

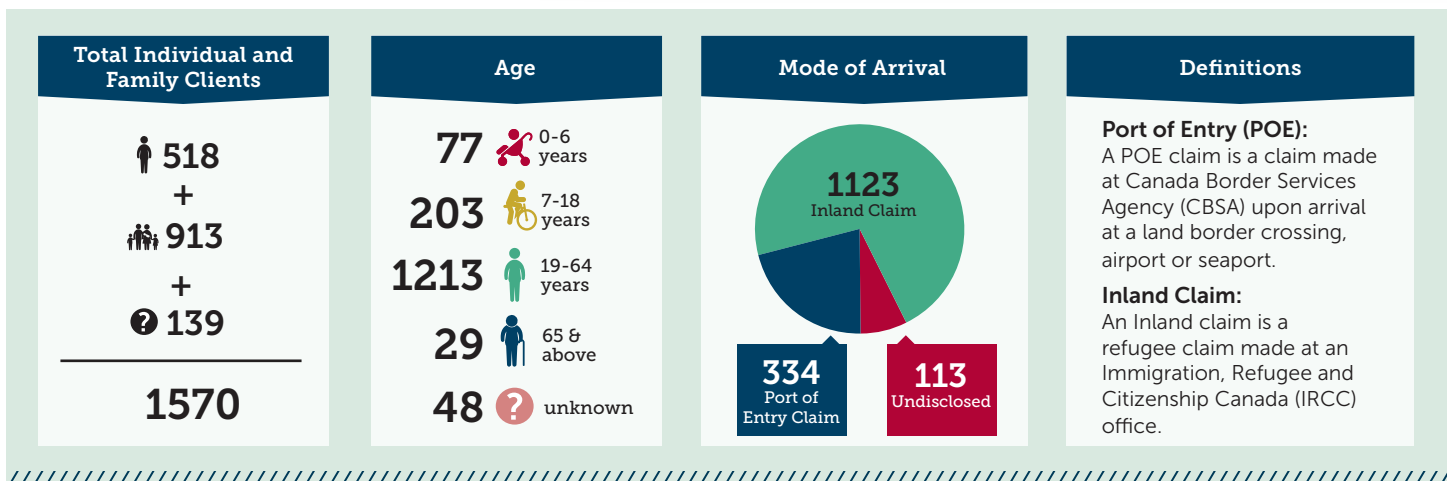
Refugee Claimants // Arrival Highlights: Oct-Dec 2019 // 2019 Roll-Up



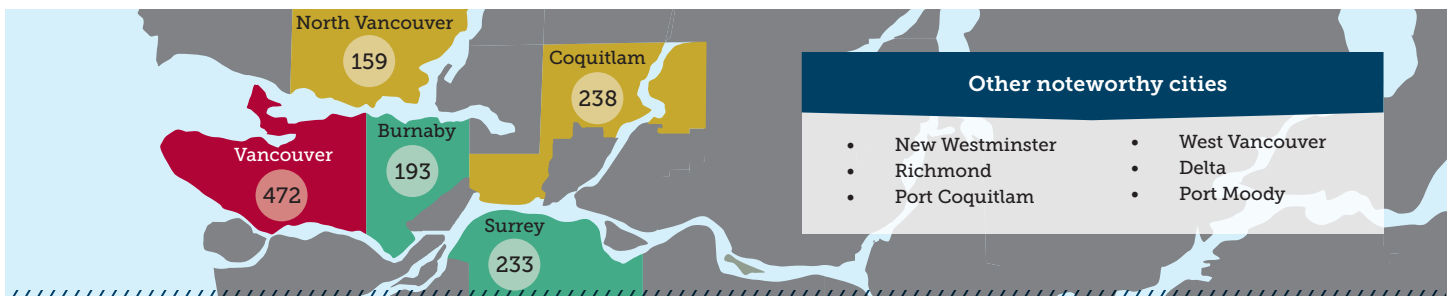
SOS Monthly Statistics of New Refugee Claimant Clients: Oct. to Dec. 2019



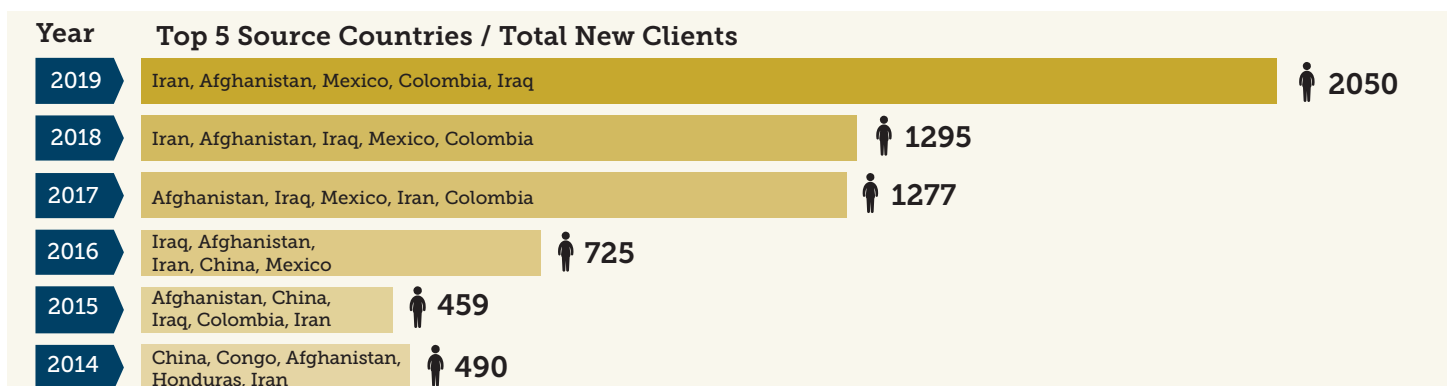
SOS Total New and Returning Clients Served: Oct. to Dec. 2019



SOS Top 5 Settlement Patterns Based on Residential Addresses: Oct. to Dec. 2019

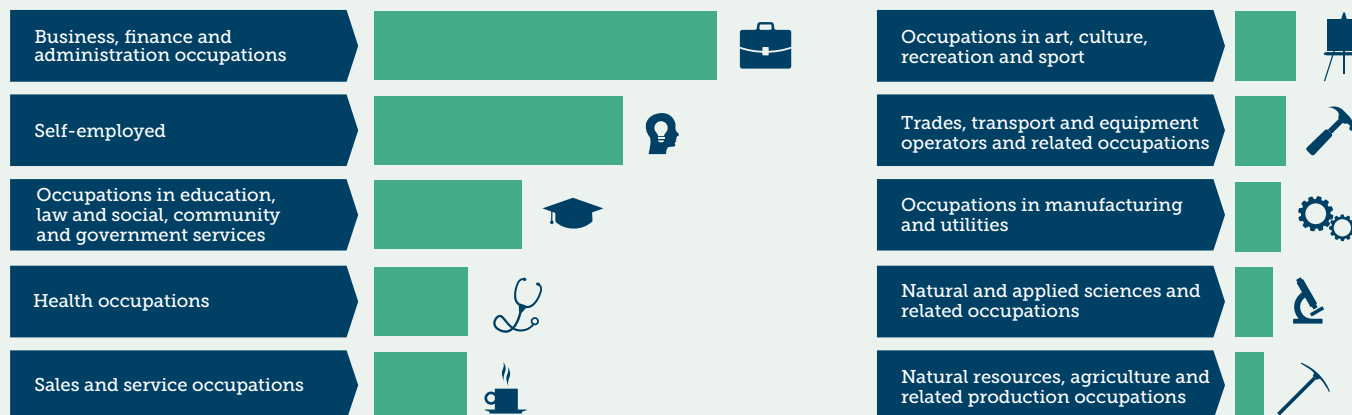


Historical Context: Annual Total New Refugee Claimant Clients – 2014 to 2019



SOS Pre Arrival Occupation / Education: Oct. to Dec. 2019

The following are highlights of the past occupation and/or education that was reported Oct-Dec 2019 by Refugee Claimants



* May have multiple responses The statistics above were provided by Settlement Orientation Services (sosbc.ca).

SOS Trends and Observations: Oct. to Dec. 2019

- SOS has been observing an increase in LGBTQ+ cases especially transgender refugee claimants coming from different countries and backgrounds with different needs and challenges. Housing services and providing adequate mental health supports that goes beyond the number of sessions covered by IFH has been a challenge.
- Another significant challenge observed is that the government rental assistance provided to refugee claimants does not correspond with the reality of the housing market. Many SOS clients have challenges entering into long-term housing because the housing portion is well below the current housing rental market and claimants have been struggling.
- The need for mental health support and counselling sessions has increased remarkably among refugee claimants.
- The current processing time for refugee claimants and Protected Persons who are applying for extended work permits is 100 days. Many of refugee claimants are forced to turn to welfare as applications are in progress and employers are hesitant to hire them without valid work permits.
- Refugee claimants with IFHP (Interim Federal Health Program) struggle to find health services as doctors, dentists, and pharmacies are reluctant to deal with IFHP patients due to challenges associated with coding and billing.

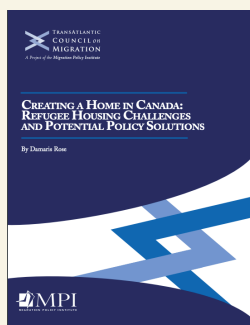
The trends and observations above were provided by Settlement Orientation Services (sosbc.ca).

Resources and Publications

REPORT: *Creating a Home in Canada - Refugee Housing Challenges and Potential Policy Solutions*

This Transatlantic Council on Migration report examines the challenges resettlement service providers, as well as private sponsors of refugees, faced in helping new arrivals find suitable and affordable housing. These included difficulties locating units large enough for big families, and a mismatch between where housing was most plentiful and affordable (often, smaller cities, suburbs, and rural areas) and where crucial integration services such as language classes and job training programs were located. The report provides responses to these challenges by the government, resettlement agencies, and the broader public that could help policymakers in Canada and elsewhere strengthen housing options for refugee newcomers.

migrationpolicy.org/research/canada-refugee-housing-challenges-policy-solutions



TOOLKIT: *Supporting Women with Precarious Immigration Status, Refugees and Refugee Claimants Facing Domestic Violence – Safety Assessment and Safety Planning Tool*

This toolkit has been developed in partnership with the BC Refugee Hub and Battered Women's Support Services (BWSS). The toolkit provides training for front-line workers on completing the safety assessment intake forms, creating safety plans for clients facing domestic violence, and a list of resources.

bcrefugeehub.ca/wp-content/uploads/2019/11/Domestic-Violence-Tool-Final.pdf



bcrefugeehub.ca



refugeehub@issbc.org



@bcrefugeehub



WelcomeBC